

PROPERTY REPORT

Property ID: 1528727724

Property Name: 40 South Main Street **Ownership:** Private
Address: 40 S MAIN ST **Apartment #:** **ZIP:** 08512

PROPERTY LOCATION(S):

County:	Municipality:	Local Place Name:	USGS Quad:	Block:	Lot:
MIDDLESEX	Cranbury township			23	81

Property Photo:



Old HSI Number: **NRIS Number:** **HABS/HAER Number:** 1

Description:

PS&S recommends that 40 S. Main Street, which includes a historic residence and garage built circa 1910, is a contributing property in the Cranbury Historic District.

The 2 ½-story, hip-roofed, foursquare-plan main block of this painted wood clapboard-clad dwelling on a stone foundation is 5 bays wide and 3 bays deep and is fronted on the southeast by a 1-story, full-width, hip-roofed porch with a pedimented central bay and backed on the northwest by a 1-story, partial-width, hip-roofed, enclosed porch. A 2-story, 3-sided window bay projects from the northeast bay of the southwest elevation and is topped by a wall gable. A gable-roofed dormer with eave returns is centered on the southeast roof slope, with a hipped roofed dormer on the northeast side. The roofs are predominantly clad in asphalt shingle and the windows predominantly have 1/1, double-hung, historic wood sash with historic louvered shutters. The main roof includes deep eaves with shaped brackets. The porch pediment, southwest elevation wall gable, and the side elevations of the dormers are clad in painted, scalloped wood shingle. The front porch includes a historic rail with square-plan balusters, and historic, fluted ionic columns on random ashlar block piers. The porch is accessed by a straight central stair with random ashlar cheek walls. The primary entrance, centered on the southeast elevation, includes a historic, large fixed light door fronted by a historic, multi-light storm door, with historic, full-height, single light sidelights. The outer bays are lighted with 2 single windows, with chamfered corners on the first floor. The second floor is regularly fenestrated and lighted in the central bay by a single window flanked on either side by narrow 1/1 sash windows. The dormer is lighted by a Serliana (Palladian window) with

Survey Name: Cranbury Local Historic District Survey 2018

Property ID:

Page 1

Principal Investigator: Emily Cooperman

(Primary Contact)

1528727724

Organization: Paulus, Sokolowski & Sartor

fixed, multi-light, diamond-patterned sidelights, an arched central window with a multi-light, lancet arch-pattered top sash, and a projecting cornice with a keystone. The northeast, side elevation is regularly fenestrated except for the first floor of the window bay, which is lighted by a small square window and a small, replaced double 1/1 sash window. A paired window with 8/1 sash lights the third floor. The southwest, side elevation is regularly fenestrated with a single window lighting the third floor. The 1-story, gable-roofed, terra-cotta tile, stuccoed garage is located to the southwest of the residence and includes a historic, sliding garage door with a fixed, 9-light window.

Historic maps indicate that the west side of S. Main Street south of the First Presbyterian Church was developed after the church subdivided this land for development after 1894. Visual evidence, such as the front doors, chamfered corners, and terra-cotta tile garages, strongly suggests that the residences at 40 – 44 S. Main Street were constructed by the same builder after the church's property was subdivided. The 1980 National Register of Historic Places Nomination for the Cranbury Historic District indicates that the 2-story residence at 40 S. Main Street was built circa 1910. The 1916 Sanborn map, which only partially includes this lot, indicates that at this date this building included a 2-story main volume fronted and backed by 1-story porches, rectangular-plan dwelling with a 1-story, full-width front porch and a 1-story back porch. The 1933 Sanborn Map, which includes the entire lot, shows the massing of the house as it exists today, with a 1-story, terra-cotta tile garage to the southwest of the residence. Historic aerial photographs and visual evidence suggest that, aside from the enclosure of the back porch and addition or replacement of some side windows, there have been no major renovation campaigns or alterations since 1933.

40 S. Main Street is a contributing property the Cranbury Historic District because it retains its integrity and historic, character-defining features such as its historic massing, windows, shutters, clapboard, shingles, front door and door surround, historic porch piers and columns, and historic porch rail and balusters. The garage retains its historic wood door and historic siding materials.

Setting:

South Main Street stretches from Brainerd Lake to the southern edge of Cranbury and is characterized by freestanding single-family residences of moderate scale ranging in date from the early 19th century to the early 20th century.

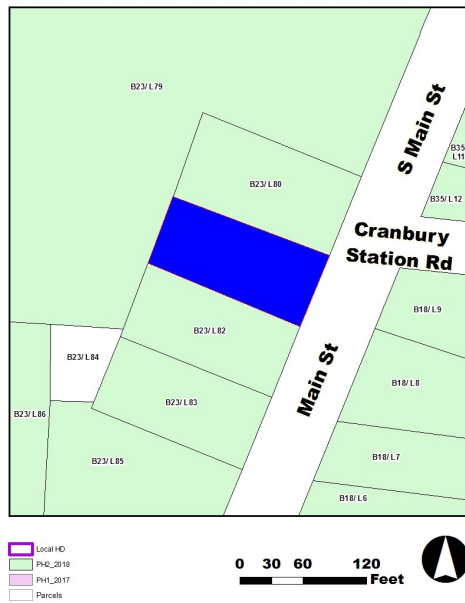
Registration and Status Dates:

National Historic Landmark?:
National Register: 9/18/1980
New Jersey Register: 8/9/1979
Determination of Eligibility: 3/25/1977
Certification of Eligibility:

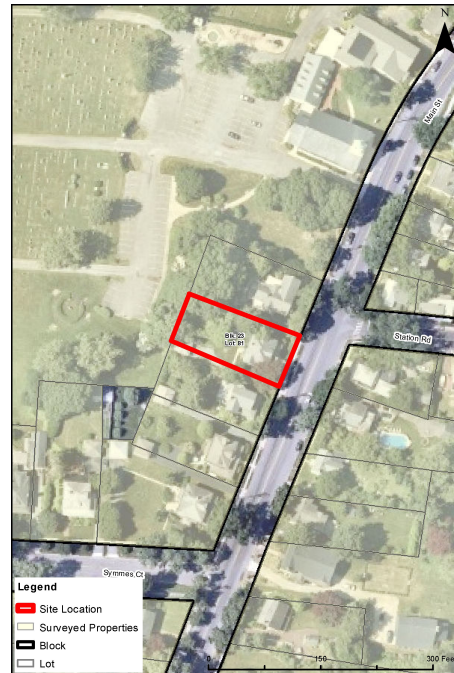
SHPO Opinion:
Local Designation: 9/26/1988
Other Designation:
Other Designation Date:

Eligibility Worksheet included in present survey? Is this Property an identifiable farm or former farm?

Location Map:



Site Map:



BIBLIOGRAPHY:

Survey Name: Cranbury Local Historic District Survey 2018
Principal Investigator: Emily Cooperman
Organization: Paulus, Sokolowski & Sartor

(Primary Contact) **Property ID:** 1528727724

Author:	Title:	Year:	HPO Accession #:	(if applicable)
(None Listed)	1916 Sanborn Map	1916		
(None Listed)	Aerial and street view photography for 1931, 1940, 1947, 1953, 1957, 1963, 1969, 1970, 1972, 1979, 1987, 1995, 2002, 2006, 2007, 2008, 2010, 2012, 2013, and 2015 available at historicaerials.com and for 1995, 2002, 2006, 2007, 2008, 2010, 2013, 2016, and 2017 available through Google Earth			
Brennan, Peggy and Frank J. Jr.	Images of America: Cranbury, Volume II	1998		
Brennan, Peggy and Frank J. Jr.	Images of America: Cranbury	1995		
Heritage Studies	Preserving Cranbury Township	1989		
(None Listed)	1876 Everts and Stewart Map	1876		
Chambers, John Whiteclay II	Cranbury: A New Jersey Town from the Colonial Era to the Present	2012		
(None Listed)	1933 Sanborn Map	1933		
Walsh, Ruth	National Register of Historic Places Nomination for the Cranbury Historic District, Cranbury Township, Middlesex County, New Jersey	1979		
(None Listed)	1850 Otley and Keily Map	1850		

Additional Information:

1202_23_81 / 2STY - SFD / 1916

More Research Needed? (checked=Yes)

INTENSIVE-LEVEL USE ONLY:

Attachments Included:

0 Building	0 Bridge
0 Structure	0 Landscape
0 Object	0 Industry

Historic District ?

District Name: Cranbury Historic District

Status: Contributing

Associated Archeological Site/Deposits?

(known or potential sites. If Yes, please describe briefly)

Conversion Problem? ConversionNote:

Date form completed: 8/24/2018

Survey Name: Cranbury Local Historic District Survey 2018

Principal Investigator: Emily Cooperman

Organization: Paulus, Sokolowski & Sartor

Property ID:

Page 3

(Primary Contact)

1528727724